

UPT559.1_Bālāvatāra pāth

4a

Handwritten text in a South Indian script, likely Grantha or Tamil, on a palm leaf manuscript. The text is densely packed and includes several circular symbols used as section markers.

4b

Handwritten text on a palm leaf manuscript, starting with a large initial character 'നീ'. The text is written in a South Indian script.

5a

Handwritten text on a palm leaf manuscript, featuring several circular symbols as section markers. The text is in a South Indian script.

5b

Handwritten text on a palm leaf manuscript, starting with a large initial character 'ന'. The text is in a South Indian script.

UPT559.1_Bālāvatāra pāth

6a

Handwritten text in Devanagari script on a palm leaf manuscript. The text is densely packed and covers most of the leaf's surface.

6b

Handwritten text in Devanagari script on a palm leaf manuscript. A small number '71' is written in the top left corner. The text is densely packed.

7a

Handwritten text in Devanagari script on a palm leaf manuscript. The text is densely packed and covers most of the leaf's surface.

7b

Handwritten text in Devanagari script on a palm leaf manuscript. A small number '70' is written in the top left corner. The text is densely packed.

UPT559.1_Bālāvatāra pāth

8a

Handwritten text in Devanagari script on a palm leaf manuscript. The text is densely packed and covers most of the leaf's surface.

8b

Handwritten text in Devanagari script on a palm leaf manuscript. The text is densely packed and covers most of the leaf's surface.

9a

Handwritten text in Devanagari script on a palm leaf manuscript. The text is densely packed and covers most of the leaf's surface.

9b

Handwritten text in Devanagari script on a palm leaf manuscript. The text is densely packed and covers most of the leaf's surface.

UPT559.1_Bālāvatāra pāth

10a

Handwritten text in an Indic script, likely Pali, on a palm leaf manuscript. The text is densely packed and covers most of the leaf's surface.

10b

Handwritten text in an Indic script, likely Pali, on a palm leaf manuscript. The text is densely packed and covers most of the leaf's surface.

11a

Handwritten text in an Indic script, likely Pali, on a palm leaf manuscript. The text is densely packed and covers most of the leaf's surface.

11b

Handwritten text in an Indic script, likely Pali, on a palm leaf manuscript. The text is densely packed and covers most of the leaf's surface.

UPT559.1_Bālāvatāra pāth

14a

Handwritten text on a palm leaf manuscript, likely a portion of the Bālāvatāra pāth. The script is in an ancient South Asian language, possibly Pali or Sanskrit, with some characters appearing to be in a different script or dialect. The text is arranged in several lines across the length of the leaf.

14b

Handwritten text on a palm leaf manuscript, continuing the Bālāvatāra pāth. The script is consistent with the previous leaf, showing a continuous flow of text across multiple lines.

15a

Handwritten text on a palm leaf manuscript, continuing the Bālāvatāra pāth. The text is densely packed across several lines, with some larger characters that may represent specific words or markers.

15b

Handwritten text on a palm leaf manuscript, continuing the Bālāvatāra pāth. The text concludes on this leaf, showing the final lines of the manuscript's content.

30a

Handwritten text in Devanagari script on a palm leaf manuscript. The text is densely packed and covers most of the leaf's surface.

30b

Handwritten text in Devanagari script on a palm leaf manuscript. The text is centered and occupies the middle portion of the leaf.

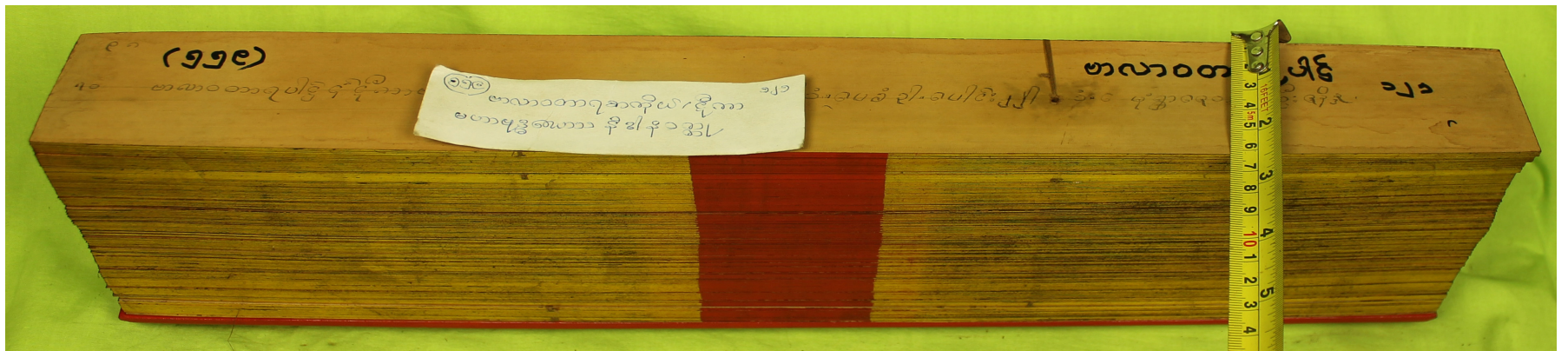
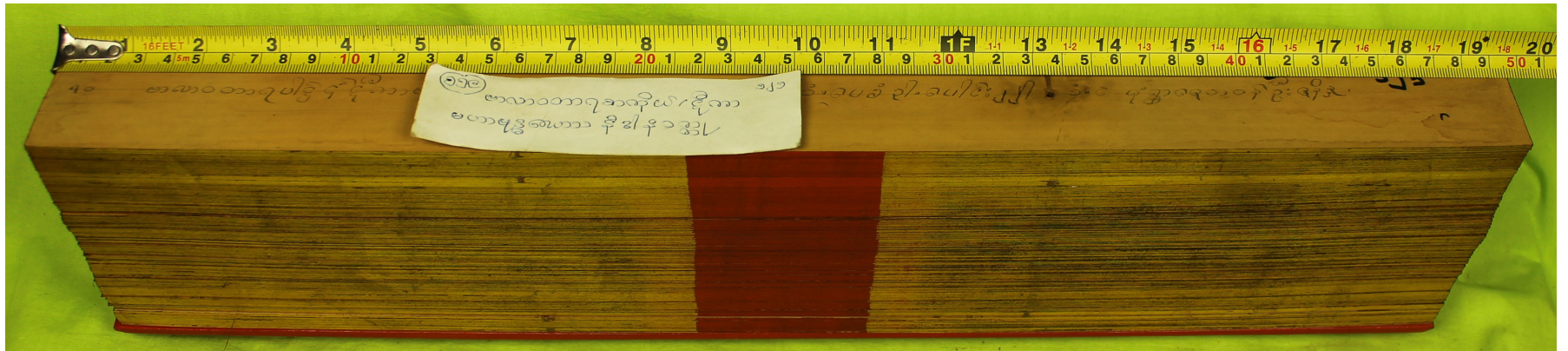
31a

Handwritten text in Devanagari script on a palm leaf manuscript. The text is centered and occupies the middle portion of the leaf.

31b

Handwritten text in Devanagari script on a palm leaf manuscript. The text is centered and occupies the middle portion of the leaf.

၁၅၉
ဗဟုသုတဆိုင်ရာ
စာအုပ်များ



၁၅၀
မဟာဝဂ္ဂာရသဒ္ဓါပိတက
မဟာမုဒ္ဒိယော နိဗ္ဗိဒ္ဓိ ၃၃၂

၅၅၉